



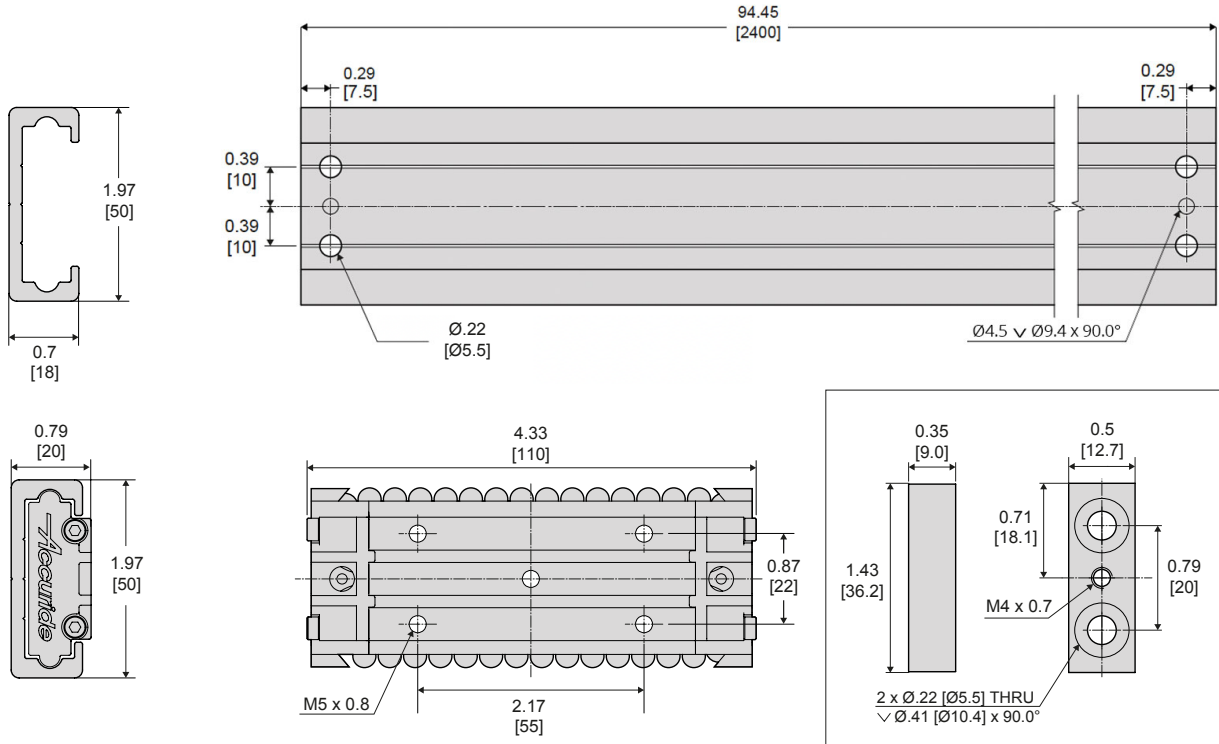
MODEL 118RC

Linear Track Motion System

APPLICATIONS: Provides guidance, support, movement or positioning for panels, boards, components.

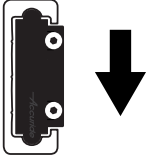
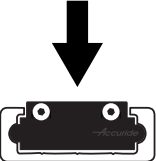
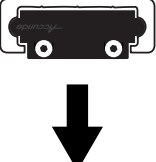
MODEL 118RC

Linear Track Motion System
Aluminum Track
Re-circulating ball carriages
Up to 800 lbs. [375 kg]

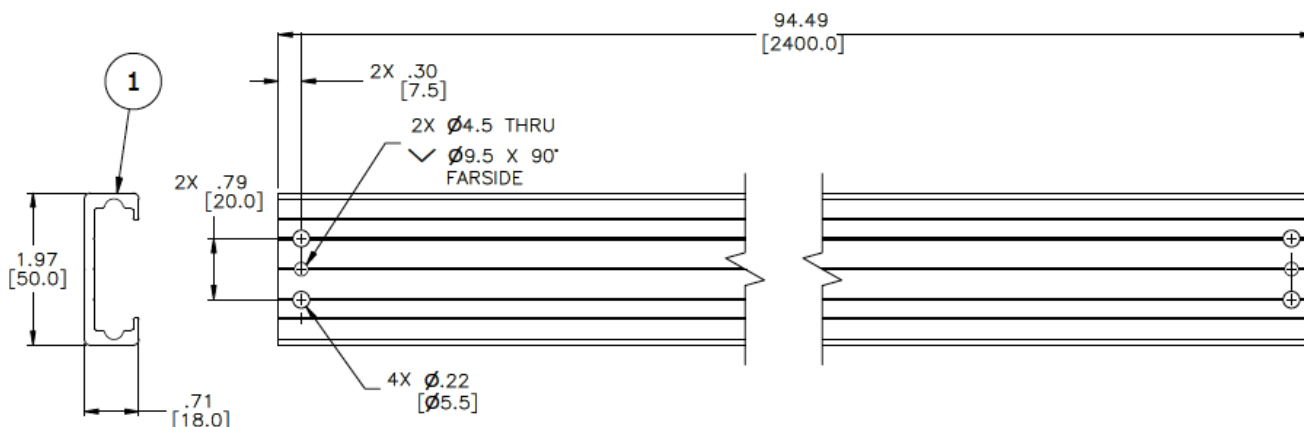


Load Rating

The load bearing capacity is based on the type and number of carriages. Due to the extensive variety of applications and possible orientations, we recommend that customers test this product to their specific requirements. This product is not recommended for high-torque applications.

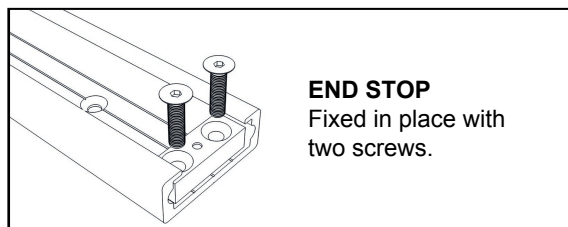
	Side Mount			
	SS118-CASSRC Stainless Steel Ball Carriage	Load Rating lbs [kg]	CB118-CASSRC Polymer Ball Carriage	Load Rating lbs [kg]
	X1	330 [150]	X1	220 [100]
	X2	661 [300]	X2	440 [200]
	Flat Mount (carriage up)			
	SS118-CASSRC Stainless Steel Ball Carriage	Load Rating lbs [kg]	CB118-CASSRC Polymer Ball Carriage	Load Rating lbs [kg]
	X1	198 [90]	X1	132 [60]
	X2	396 [180]	X2	264 [120]
	Flat Mount (carriages down)			
	SS118-CASSRC Stainless Steel Ball Carriage	Load Rating lbs [kg]	CB118-CASSRC Polymer Ball Carriage	Load Rating lbs [kg]
	X1	330 [150]	X1	220 [100]
	X2	661 [300]	X2	440 [200]
	SS118-CASSRC Stainless Steel Ball Carriage	Load Rating lbs [kg]	CB118-CASSRC Polymer Ball Carriage	Load Rating lbs [kg]
	X1	330 [150]	X1	220 [100]
	X2	661 [300]	X2	440 [200]
	SS118-CASSRC Stainless Steel Ball Carriage	Load Rating lbs [kg]	CB118-CASSRC Polymer Ball Carriage	Load Rating lbs [kg]
	X1	330 [150]	X1	220 [100]
	X2	661 [300]	X2	440 [200]

Weight should be evenly distributed across the carriage(s).



Preparing the Track

1. Select the appropriate length of aluminum track.
2. Calculate the length of track required, keeping in mind the following measurements: each stop is 0.5" [12.7 mm] wide, each carriage 4.33" [110.0 mm] long (compressed), and each Damper is 7.3" [186.0 mm] long.
3. Cut track to the determined length. Multiple lengths of track may be butted together for a longer span.
4. Using the two guidelines measure along the length of the track and drill countersunk fixing holes as required.
5. For end stops use the back of the track and measure 0.3" [7.5 mm] in from each end of the track, and drill countersunk holes 0.22" [5.5 mm] in diameter. Two holes per end, four holes total.
6. Clean the track of any particles and proceed to the assembly stage
7. Fix one end stop to one end of the track using two screws. Leave the other end of the track open to feed carriages. When all carriages are placed on the track, install the second end stop to close the track.

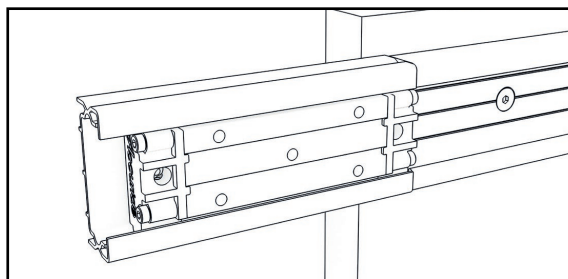
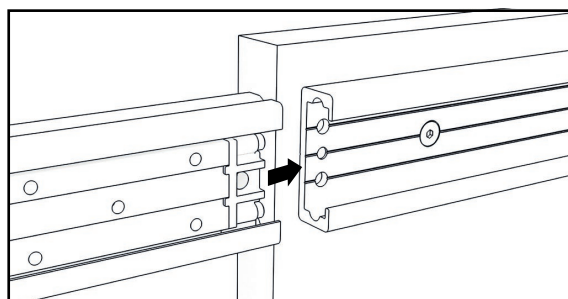


Installing Carriages

8. Align the outer plastic sheath of the carriage to the aluminum track and butt the end of the plastic sheath against the end of the track.
9. Slide the carriage from the plastic sheath into the aluminum track.



Ensure the plastic sheath is fully pressed against the aluminum track before sliding the carriage through; otherwise, the unit will fall out and drop ball bearings. Use flat and even surface for the action to avoid misalignment.



10. Repeat until all carriages are installed within the confines of the track.
11. Install the other end stop using two screws mount slide as desired on a clean and flat surface.

The optional Damper (CB0118-ECRC) cushions and decelerates the last 7.3" [186 mm] of travel.

End stops are not required if Damper is used.

If a Damper is used, one of the following is required;

SS0118-BRKTRC

SS0118-SMBRKTRC - for Sliding door applications

NOTE; order as many brackets as carriages.

To install the Damper measure 0.36" [9.2 mm] from the end of the track and then secure to the track with M6.

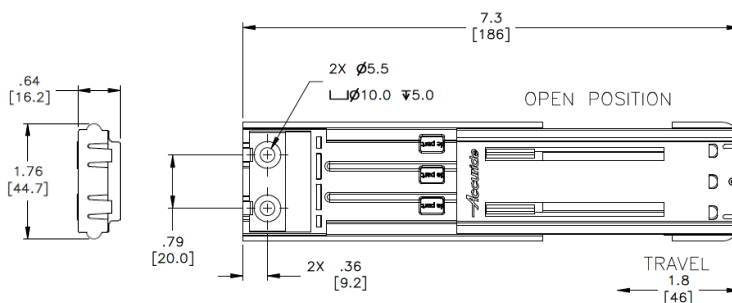


Damper must be used with recycling bracket or with door mounting kit.

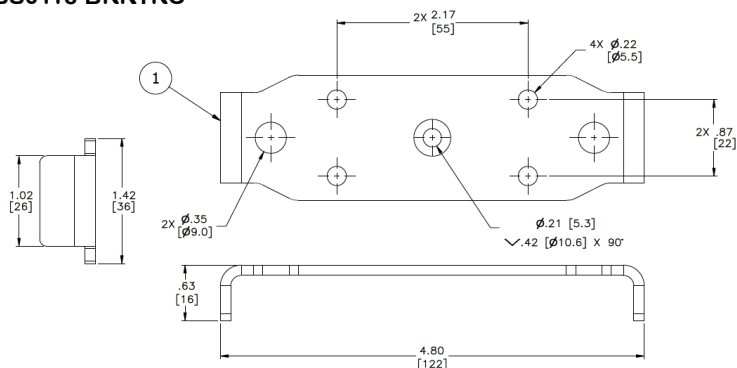
Optional Sliding Door Mounting Hardware

Description	Part Number
Damper	CB0118-ECRC
Recycling Bracket (Bought with Damper)	SS0118-BRKTRC
Self Leveling Door Bracket kit	SS0118-SMBRKTRC

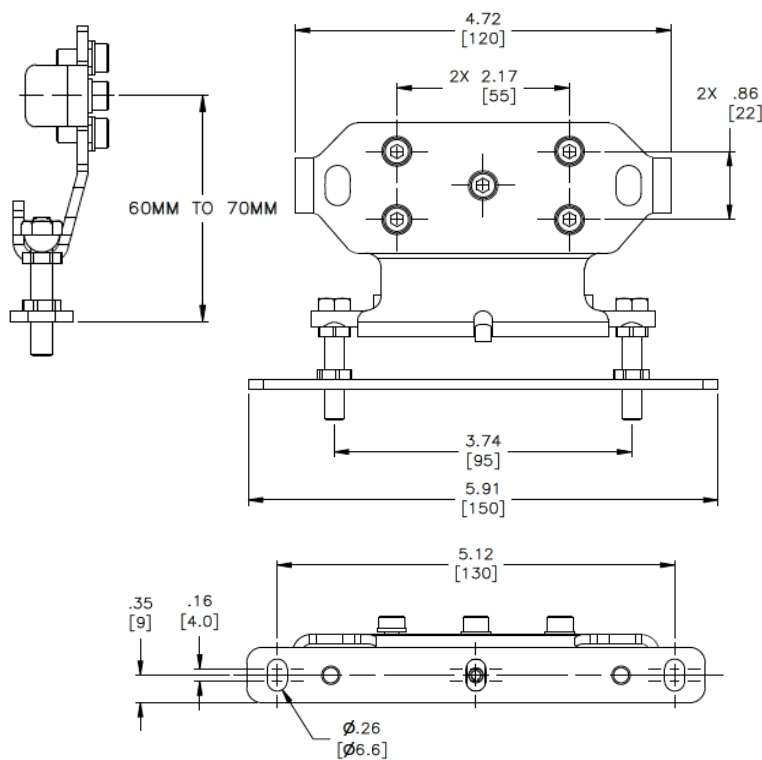
CB0118-ECRC

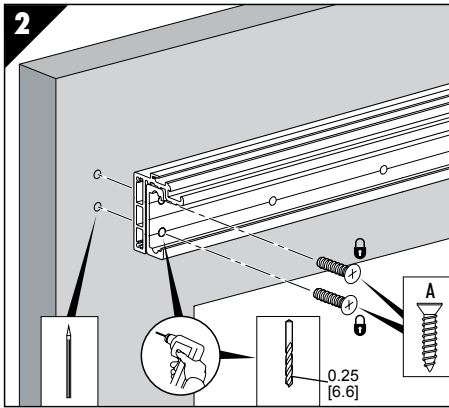


SS0118-BRKTRC



SS0118-SMBRKTRC





3a

This diagram shows the second part of the door handle being inserted into the pre-drilled hole in the door edge. An arrow indicates the direction of insertion. The handle has a small circular hole on its side, which aligns with the internal structure of the door edge.

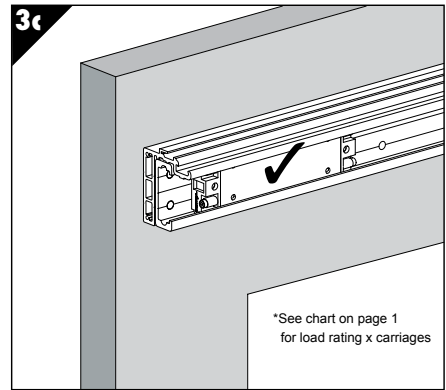
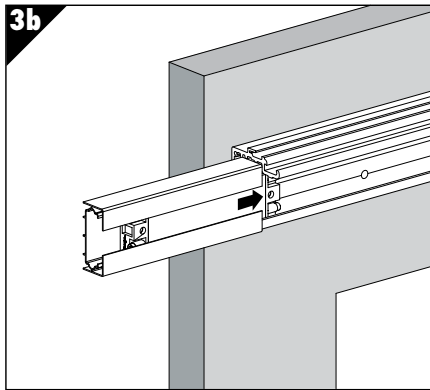
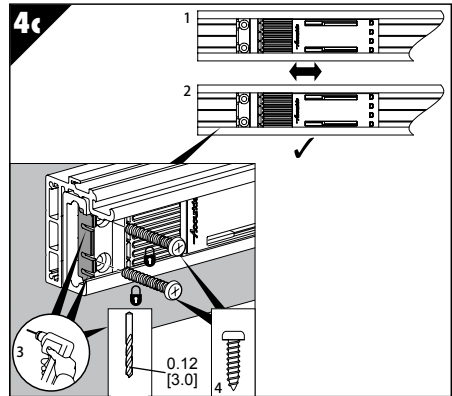
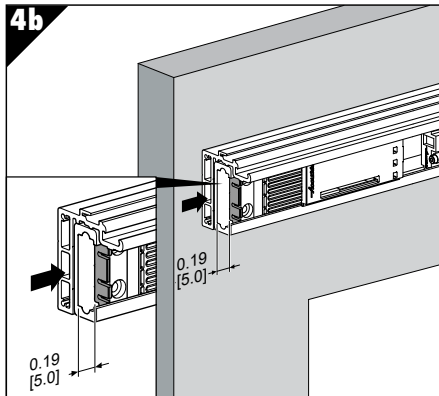
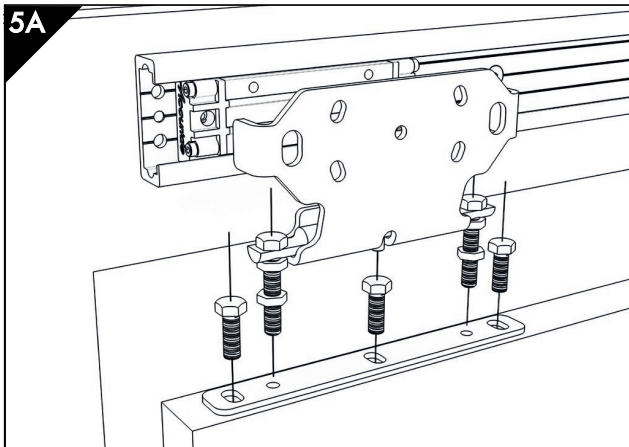


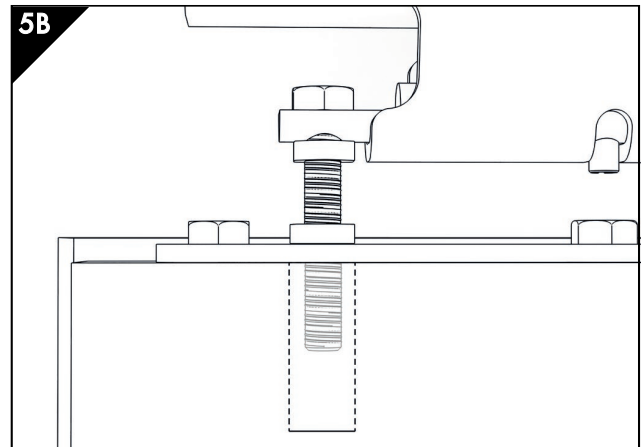
Diagram 4a shows the handle being inserted into the handle hole of the door frame. Arrows indicate the direction of insertion.



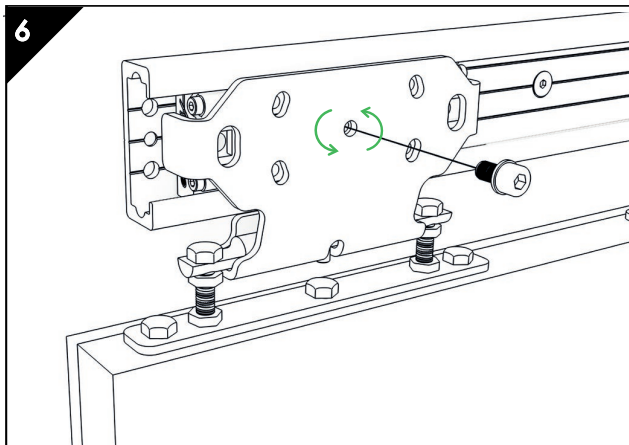
Mount the hardware kit on the door using M8 screws, then hang the door by attaching the top of the hardware kit to the carriages using additional M8 screws.
(Figures 5-11)



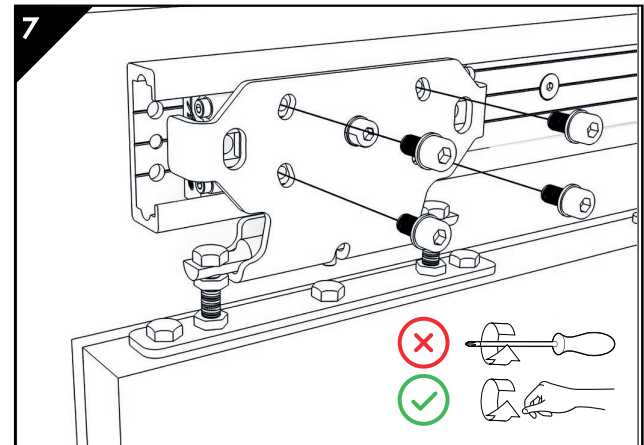
Attach the bottom bracket to the top of the door using 3x bolts, M6 are recommended. Then attach the rest of the door bracket to this bracket using the bolts provided.



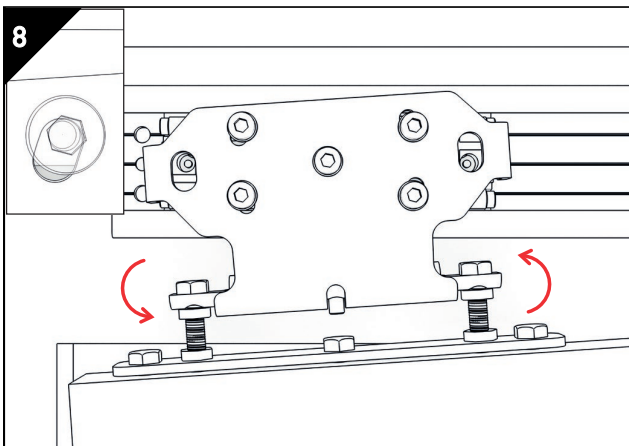
The bolts provided should always extend through the bottom bracket into the door. Depending on the door, a clearance hole may need to be drilled to achieve this.



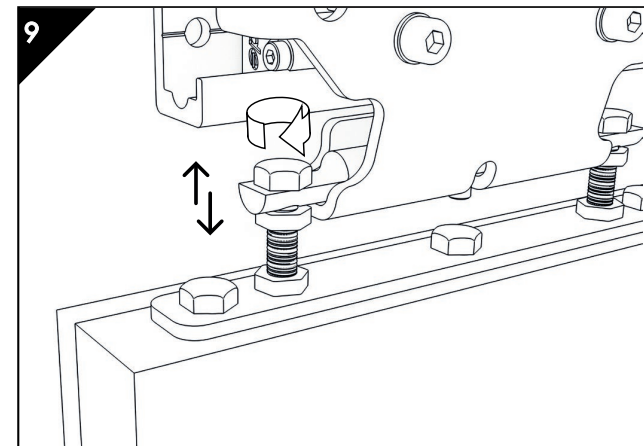
Attach the bracket to the carriage using the central fixing, using one of the screws provided. This is used as a pivot point.



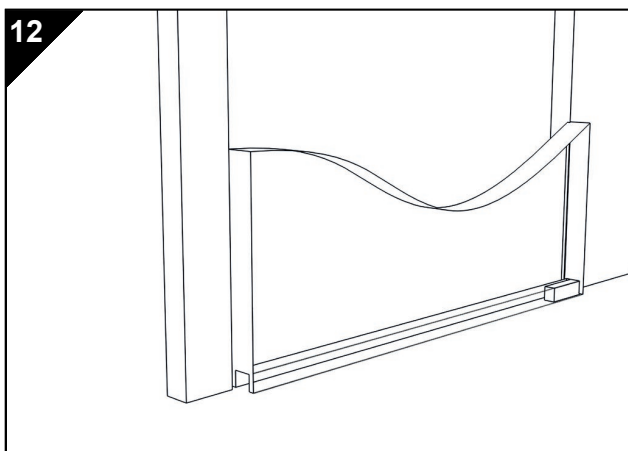
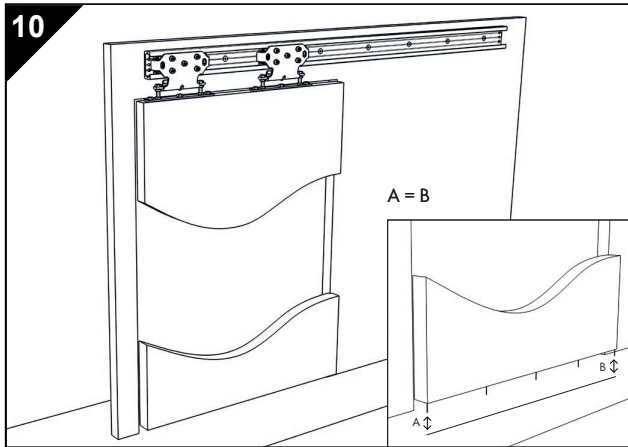
Attach the remaining four screws to the bracket. Leaving them "finger tight".



The bracket will pivot slightly to aid height adjustment.

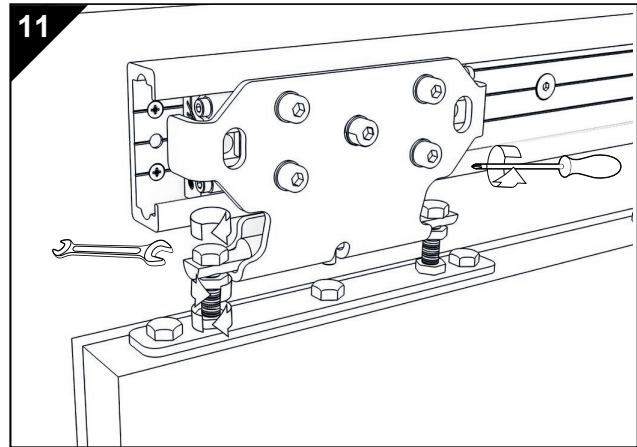


Adjust the bolts up and down to level the door. The nuts may need to be loosened to achieve this.



Optional – customer may add a guide to the bottom of the door.

- Note:**
- Customer must supply floor guide.
 - If Damper is not used, protection buffers will be needed at the top and bottom of door/frame.
 - Lubrication: Castrol Spheral Grease to NLGI 2 or similar. Apply through hole in carriage/bracket using a conical grease nozzle.



Important – tighten all nuts, bolts and screws

Packaging & Ordering

Components are sold singly or as a kit, review part numbers and descriptions below.

Components

AL0118-0240RC	94.5" [2.4m] Aluminum track (x1)
SS0118-CASSRC	(x1) Carriage - Stainless steel balls
CB0118-CASSRC	(x1) Carriage - Polymer balls (x1)
AL0118-STOPRC	End stops (2 stops + 2 Screws)
SS0118-BRKTRC	Recycling bracket

Optional Kits

CB0118-ECRC	Damper (x1)
--------------------	-------------

Door Hardware

SS0118-SMBRKTRC	Door Bracket
------------------------	--------------

118RC ordering example

Complete your order for model 118RC by specifying the following:

	QTY	P/N
Total Tracks	4 ea	AL0118-0240RC
	QTY	Carriage type
Total Carriages	8 ea	SS0118-CASSRC
	QTY	P/N
Damper	8 ea	CB0118-ECRC
Recycling Bracket	8 ea	SS0118-BRKTRC

Accuride

ACCURIDE INTERNATIONAL INC.

12311 Shoemaker Avenue
Santa Fe Springs, CA 90670
TEL (562) 903-0200
FAX (562) 903-0208
www.accuride.com

Manufacturing, Engineering, and Sales

United States • Germany • Japan • Mexico • United Kingdom • China

Copyright © 2023 Accuride International Inc. TE_118RC_N_0723

Packaging & Ordering

Components are sold singly or as a kit, review part numbers and descriptions below.

Components

AL0118-0240RC	94.5" [2.4m] Aluminum track (x1)
SS0118-CASSRC	(x1)Carriage - Stainless steel balls
CB0118-CASSRC	(x1)Carriage - Polymer balls (x1)
AL0118-STOPRC	End stops (2 stops + 2 Screws)
SS0118-BRKTRC	Recycling bracket

Optional Kits

CB0118-ECRC	Damper (x1)
--------------------	-------------

Door Hardware

SS0118-SMBRKTRC	Door Bracket
------------------------	--------------

118RC ordering example

Complete your order for model 118RC by specifying the following:

	QTY	P/N
Total Tracks	4 ea	AL0118-0240RC
	QTY	Carriage type
Total Carriages	8 ea	SS0118-CASSRC
	QTY	P/N
Damper	8 ea	CB0118-ECRC
Recycling Bracket	8 ea	SS0118-BRKTRC



ACCURIDE INTERNATIONAL INC.

12311 Shoemaker Avenue

Santa Fe Springs, CA 90670

TEL (562) 903-0200

FAX (562) 903-0208

www.accuride.com

Manufacturing, Engineering, and Sales

United States • Germany • Japan • Mexico • United Kingdom • China

Copyright © 2023 Accuride International Inc. TE_118RC_N_0523