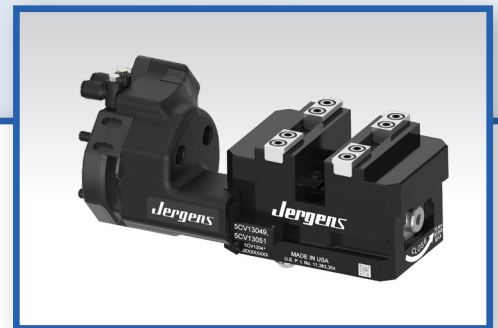
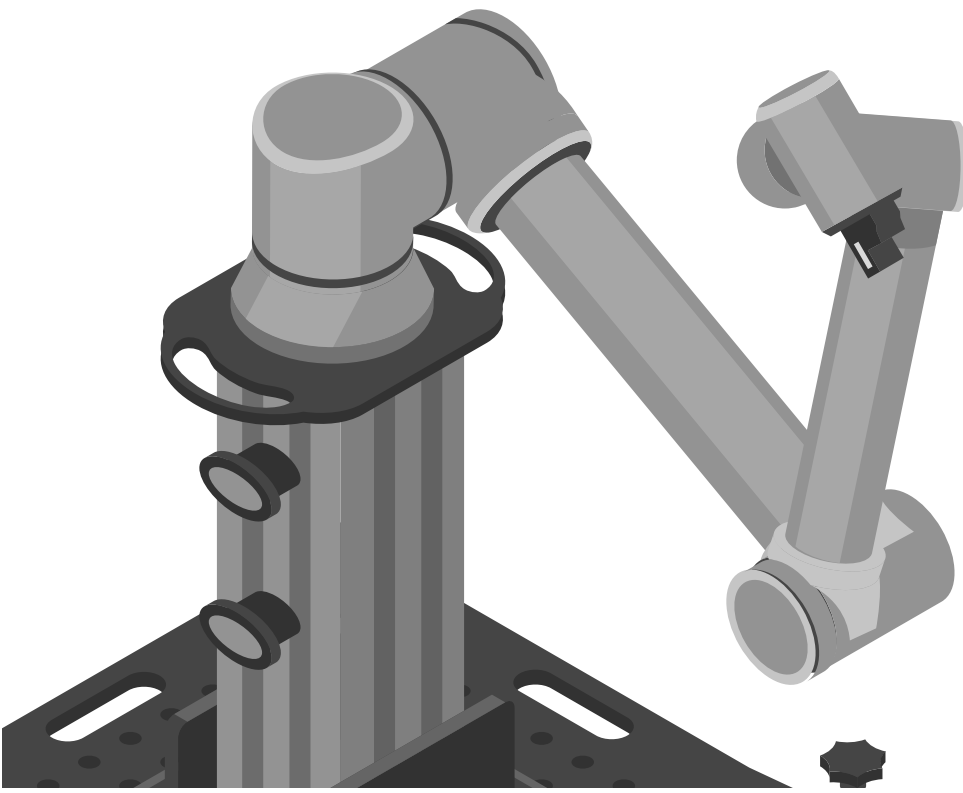




# Jergens®

## MT-R

### END OF ARM TOOLING



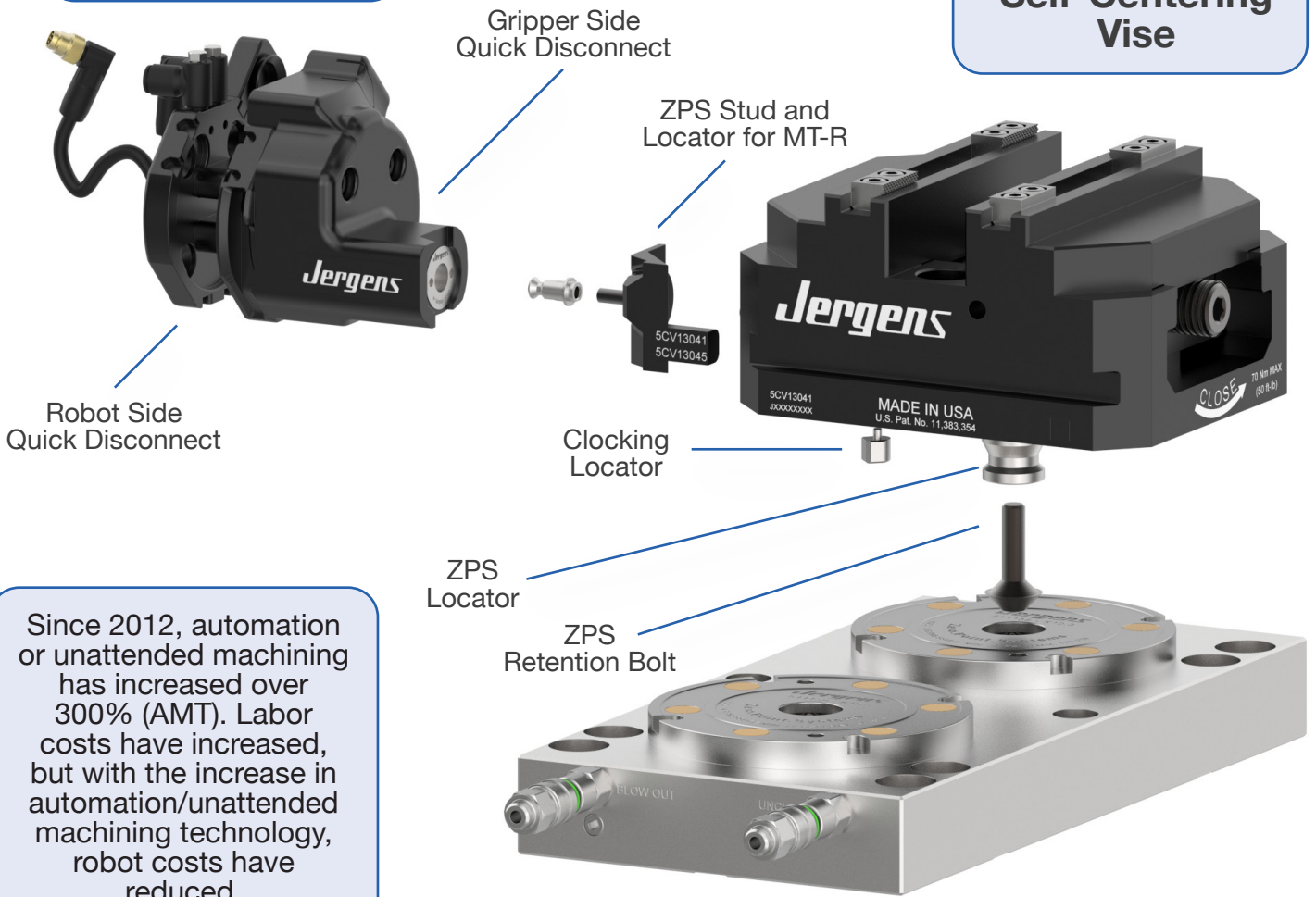


- 1** MT-R fits ISO-9409-1-50-4-M6 standard tool flange for cobots. This is the standard 50mm pitch circle diameter with (4) M6 holes.
- 2** There is a blowoff in the MT-R if that can reduce excessive tool changing when conditions allow this. This speeds up cycle speed by eliminating a tool change in some instances.
- 3** Power though the cobot like the 8-pin connector on UR or Fanuc systems is included in the MT-R.
- 4** The side light in the MT-R can be configured to be always on when connected, always off, lit from a cobot signal, or lit from a sensor signal such as a camera or prox sensor output. This is selectable via a switch and does not require rewiring.
- 5** MT-R produces pull in force of 53 lbs., but has a holding force of 1349 lbs. Payload capacity for the system is 50lbs which exceeds the payload of most cobots.

# ARE YOU TAKING ADVANTAGE OF AUTOMATION/UNATTENDED MACHINING? MEET THE MT-R

**MT-R**

**Self-Centering  
Vise**



Since 2012, automation or unattended machining has increased over 300% (AMT). Labor costs have increased, but with the increase in automation/unattended machining technology, robot costs have reduced.

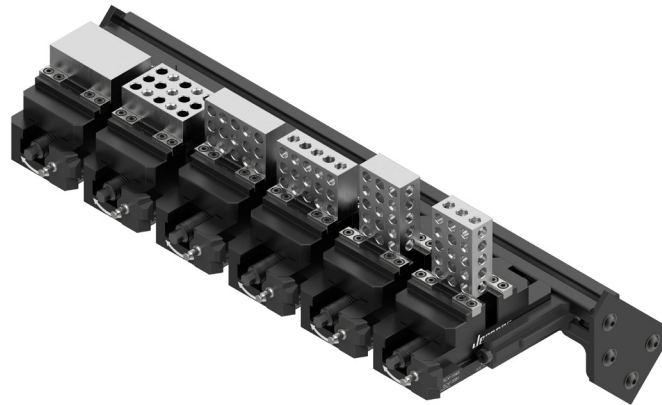
**Are you taking advantage of automation or unattended machining for better utilization in your shop?**

Part Number	Description
701005	MT-R with Wingman
701005-A	MT-R without Wingman

## FOR YOUR VISE HOLDING NEEDS: THE BEEHIVE



**VERTICAL**



**HORIZONTAL**

### FEATURES & BENEFITS

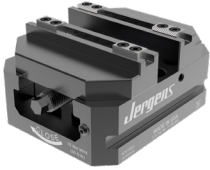
- Adjustable vise bars accommodate varying workpiece heights
- Suspended vises stay clear of debris for easier loading
- Custom Beehives are recommended for optimal fit - Jergens Applications Engineers can assist
- Large swivel wheels ensure mobility in dirty environments; wheel locks included
- For unattended production, a robot camera is advised to verify vise placement and orientation
- Flat-packed beehives come with labeled parts and an assembly video
- Wear surfaces are Cerakote-coated to enhance durability and resist hot chip damage
- Beehives can be custom built to hold ZPS plates instead of vises
- Standard extruded aluminum construction allows easy structural modifications

**WE CAN UPDATE YOUR CURRENT JERGENS  
SELF-CENTERING VISES TO WORK IN A MT-R  
CONFIGURATION. CONTACT US FOR MORE DETAILS.**



## ADDITIONAL PRODUCTS

### JERGENS MANUAL SELF-CENTERING VISE



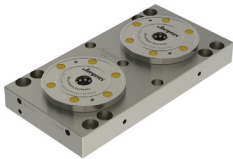
Available in both 75mm and 130mm widths, these vises can accommodate a wide array of workpiece sizes. The quick-change jaws incorporate a pull-down feature to actively minimize jaw lift.

### PULL STUDS



One zero point pull stud and one timing stud  
Repeatability .0002"

### ZPS PLATES



Stocked low air pressure clamping modules  
Available in 2 or 4 units


# ONLINE ENGINEER SUPPORT SERVICE



# Jergens®

## WORLD HEADQUARTERS

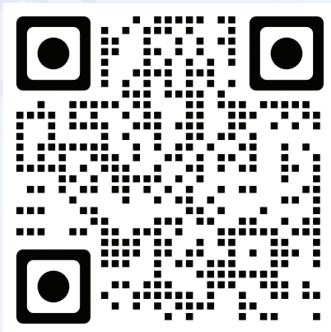
15700 S. WATERLOO ROAD  
CLEVELAND, OH 44110-3898

 877.426.2504

 [JERGENSINC.COM/WORKHOLDING](http://JERGENSINC.COM/WORKHOLDING)

 [WORKHOLDING@JERGENSINC.COM](mailto:WORKHOLDING@JERGENSINC.COM)

FIND OUR WORKHOLDING PRODUCTS  
AND SUPPORTING INFO ONLINE.



DISTRIBUTED BY:



WORKHOLDING SOLUTIONS



SPECIALTY FASTENERS



LIFTING SOLUTIONS

©2026 JERGENS, INC.

